

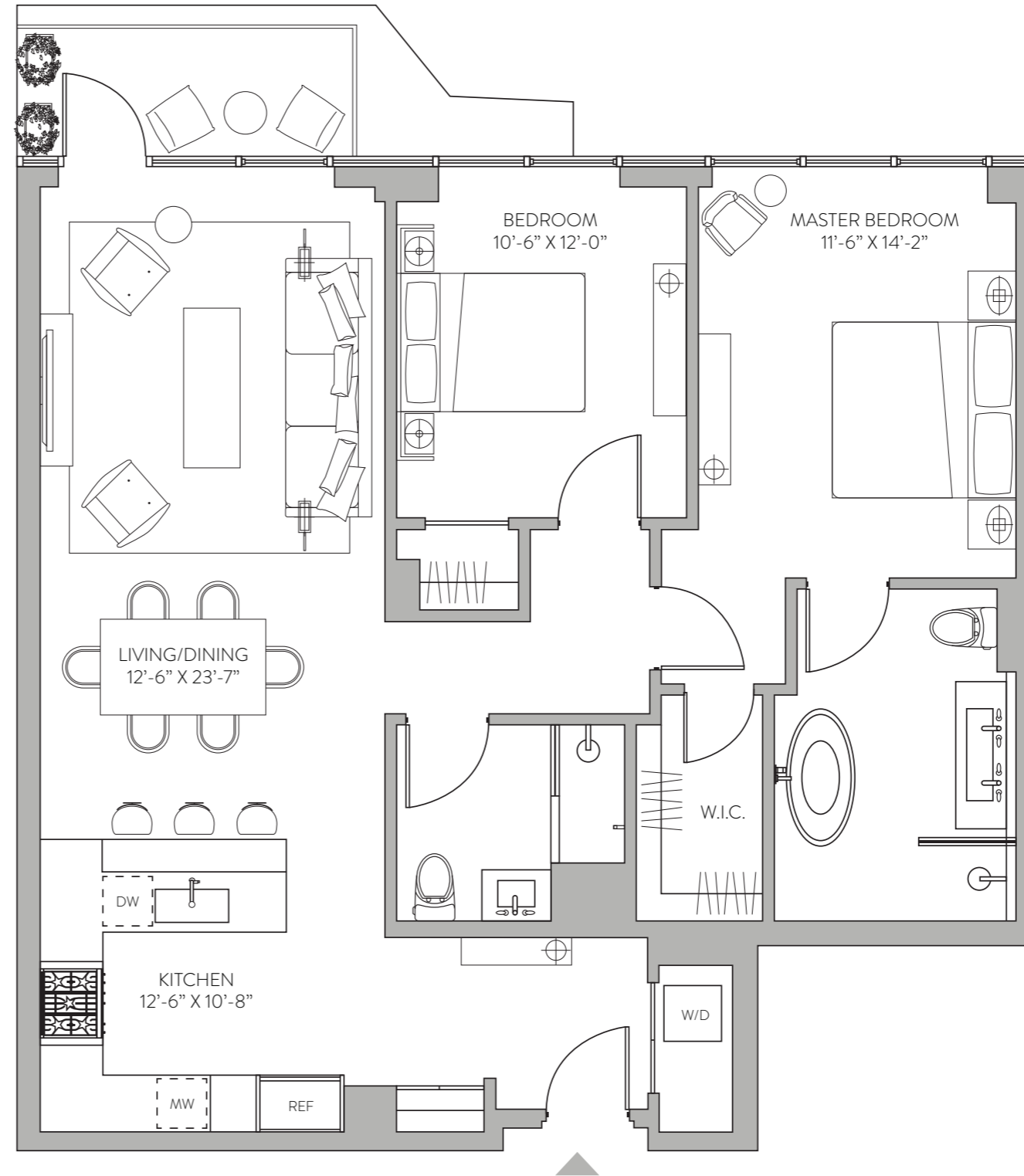
# RESIDENCE 912

2 BEDROOMS | 2 BATHROOMS

Interior 1,205 square feet | 112 square meters

Exterior 60 square feet | 6 square meters

- 6" white oak hardwood flooring with cerused finish throughout
- Floor to ceiling high performance, double glazed windows
- High performance Daikin HVAC system with zoned controls
- Dedicated laundry area
- Custom kitchen cabinetry with brushed nickel hardware
- Polished Cielo Quartzite kitchen countertops and backsplash
- Thermador appliance suite
- Polished Blue de Savoie porcelain wall slabs
- Custom walnut vanity with Kohler fixtures
- Enhanced wiring infrastructure for Smart Home Technology
- Ample storage throughout
- Access to over 25,000 square feet of amenities



All floor plans and renderings are artist's conceptions and are not intended to be an actual depiction of the walls, windows, walks, landscaping, and balconies. All dimensions, plans and elevations are approximate and subject to normal construction variances and tolerances. Sponsor reserves the right to make changes due to unforeseen conditions in accordance with the Offering Plan.

